



French:

Revisiting colours and learning the names of different animals.

Computing:

Using Scratch to simulate the journey of food and to write a food quiz.

PSHE:

Personal Safety: Discussing ways to keep safe, how to say no to something we don't like and people we can talk to if we feel worried.

Art:

Modelling Relationships: Sketching people and creating models that reflect emotions or relationships (e.g. friendship).



Science:

Journey Through the Body: Identifying types of teeth and their function; exploring how the different parts of the digestive system work; understanding and making food chains.

Music:

Continuing to develop confidence playing tunes on the recorder, as well as learning about note names and values.

Journey through the Body

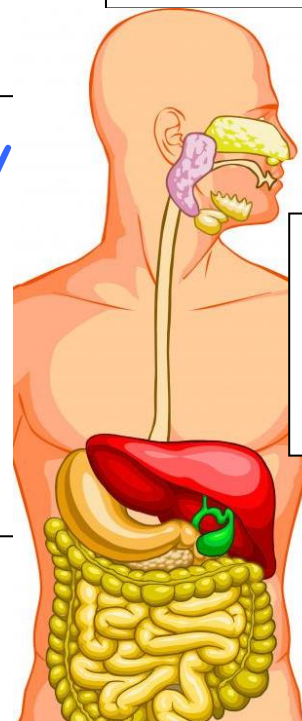
We will be learning about food, the different types we need for a healthy, balanced diet and how it is digested in our bodies. We will also be learning more about food from different countries and developing our own culinary skills by cooking a delicious savoury dish! Please let us know if you have any expertise about this topic that you would like to come in and share.

Literacy:

Non-fiction: Writing balanced arguments on the pros and cons of healthy eating.
Fiction: Writing the stories of an imagined journey through the digestive system.
Exploring and writing traditional Christmas stories.
Poetry: Studying and performing the 'Babushka' poem by Edith M. Thomas.
Spelling: Continuing to explore and practise common spelling patterns.

PE:

Gymnastics: Learning how contact points and centre of gravity affect the performance of balances.
Dance: Creating a dance, based on the idea of "cold places" and including changes of speed, level, direction and space.



Design & Technology:

Cooking: Exploring recipes and their ingredients; using them to design and cook our own savoury dish!



Maths:

Developing accuracy and confidence with adding, subtracting and multiplying larger numbers.
Finding fractions of shapes, numbers and quantities and exploring equivalence.
Learning to tell the time accurately with the 12- and 24-hour clock and solving time problems.
Creating bar and line graphs and interpreting them to find out information.